

Adding a Fire Detector in the Address Line (FDA-9116)

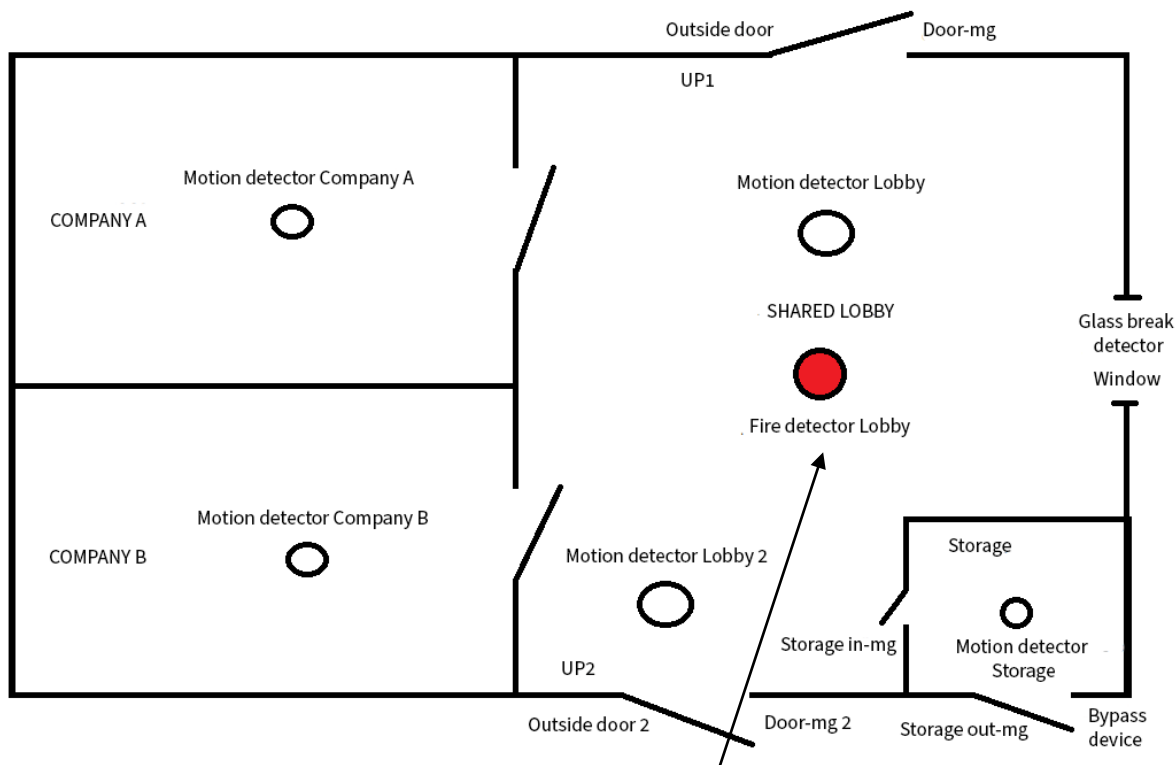
A fire detector is a device that reacts to a fire. It detects smoke, heat or a combination of these, or it reacts to a call point being pressed.

To ensure fire safety, install the fire detectors in a central location in the monitored area. Install the fire detectors in locations where there is a higher risk of fire or spaced evenly so that they cover a specific area.

When the fire detector is connected and installed properly, consider the space-specific requirements and use the following example for programming the settings.

Programming

In the following figure, the fire detector is installed in a central location, in the middle of the shared lobby. The table lists the required programming parameters.



Type	Name	Parameter	Value
Address	Fire detector Lobby	FIRE DETECTOR (Model)	Selected
		FIRE (Function)	Selected
		24 h	Selected
		Treat-tamper alarm as fault	Not selected
		Fault text	MISSING
		Treat Masking-alarm as fault	Not selected
		Fault text	COVERED
	Belongs to groups	SHARED LOBBY	